

DOCM-T3 G

COMMERCIAL Tap Range DOCM WC pack GREY with TMV3 SOLO tap



Features:

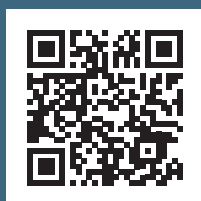
- Grey Corrosion resistant aluminium construction
- LANTAC approved, left or right handed single box solution
- Vandal resistant grab rail design
- DocM compliant
- Close coupled WC & cistern included
- Sequential TMV3 SOLO basin mixer tap included
- Pack includes; 4 x 600mm grab rails, 1 x 450mm grab rail, 1 x 800mm hinged grab rail, 1 x close coupled WC pan and cistern, 1 x ring only toilet seat, 1 x two tap-hole basin and fittings, 1 x TMV3 basin mixer tap, 1 x spatula cistern lever.

Product Certifications:

WRAS Certificate No: 1412015
WRAS Expiry Date: 31/12/2019
TMV3 Certificate No: BC1407/0714
TMV3 Expiry Date: 18/07/2019



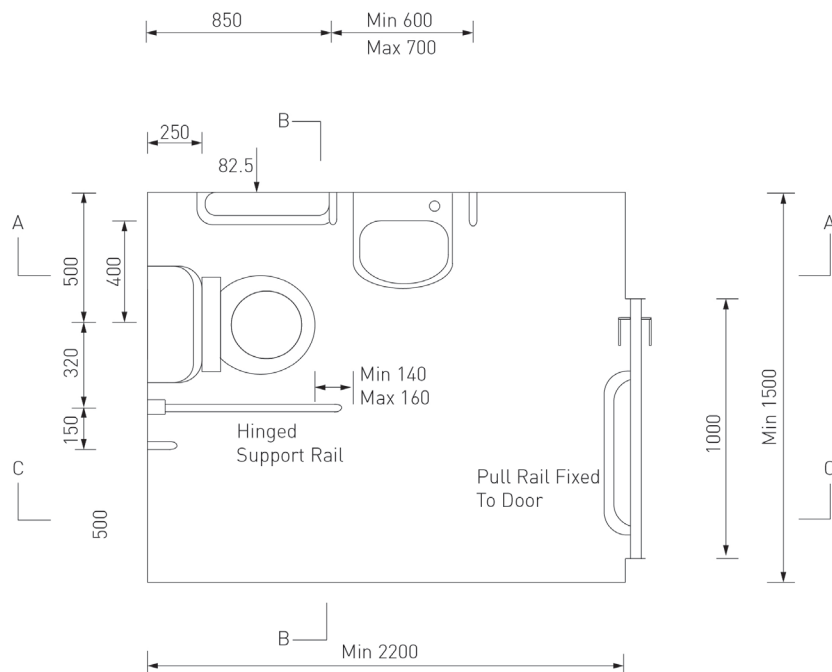
Also available from the
COMMERCIAL Range is:



Specification

Style:	Contemporary/Commercial
Product Type:	DOCM
Finish/Colour:	Grey/White
Main Construction Material:	Vitreous China
Mount Type:	Wall Mounted
Handle Type:	Lever
Connection Inlet:	15mm Copper Tails
Number of Tap Holes Required:	1
Valve/Cartridge Type:	Thermostatic Cartridge
Plumbing System Suitability:	All, Preferably Balanced
Working Pressure Range:	Min 0.1 Bar, Max 5.0 Bar
Maximum Hot Water Temperature: °c	65
Maximum Dynamic Pressure: (bar)	5
Maximum Static Pressure: (bar)	10
Flow Type:	Single
Flow Rate: (l/min @ 3 bar)	22
Connection Outlet:	N/A
Isolation Included:	No

Dimensions (measurements in mm)



Flow Rates (l/min)

System Pressure (bar)	0.2	0.5	1	2	3	5
Without Flow Regulators	5.4	8.5	12	17.5	22	27.5
With Flow Regulators	---	---	7	8.9	9.5	9.5

TECHNICAL
DATA
SHEET



BRISTAN
TAPS & SHOWERS

D1